

---

README - Agilent 2200 TapeStation Software

---

Contents

1. Introduction
  - 1.1 New features with A.01.05 (SR1)
  - 1.2 New features with A.01.05
  - 1.3 New features with A.01.04
  - 1.4 New features with A.01.03
  - 1.5 New features with A.01.02
2. System Configuration
  - 2.1 System Requirements
    - 2.1.1 PC Hardware Requirements
    - 2.1.2 Operating System Requirements
  - 2.2 Software Configuration
3. Software Installation and Setup
  - 3.1 Installation Instructions
  - 3.2 Uninstall Instructions
  - 3.3 Downgrade Instructions
4. Getting Started
  - 4.1 Connecting your 2200 TapeStation
5. Getting Help
  - 5.1 Using Online Help
  - 5.2 Getting Support
6. Known Problems or Limitations

---

## 1 Introduction

---

This document provides last minute information and installation advice corresponding to the Agilent 2200 TapeStation Software.

### 1.1 New features with A.01.05 (SR1)

A.01.05 (SR1) was released shortly after A.01.05 to resolve a bug which disrupted the running of more than 16 samples from a 96 well plate.

### 1.2 New features with A.01.05

A.01.05 release provides the following enhancements:

- DNA Integrity Number (DIN) for the Genomic DNA Assay
- Enhanced alert and observation flagging
- Enhanced reporting
- Enhanced RIN<sup>e</sup> algorithm
  - Improvements made to address issues seen with a small percentage of customer data
  - Customers may see small alterations in RIN<sup>e</sup> values
- USB 3 Compatibility for instrument connection to bundle laptops
- Support for Windows 8.1
- Updated comparison context
- Faster analysis of 96-well plate files

### 1.3 New features with A.01.04

A.01.04 release provides the following enhancements;

- Support for new ScreenTape Assays
  - D1000 ScreenTape Assay
  - High Sensitivity D1000 ScreenTape Assay
  - RNA ScreenTape Assay
  - High Sensitivity RNA ScreenTape Assay
- Improved RNA and High Sensitivity RNA ScreenTape Assay features
  - Data analysis for both eukaryotic and prokaryotic samples
  - Improved resolution achieving Bioanalyzer comparable results
  - Improved quantification
- Streamlined ribbon control for ease of use
- Improved online help

### 1.4 New features with A.01.03

A.01.03 release provides improved software stability over the previous A.01.02 release and adds enhancements including the following,

- Supports Genomic DNA ScreenTape Assay

- Saveable comparison file
- Enhancements in data export - now offers XML and improved CSV export

## 1.5 New features with A.01.02

A.01.02 release provides improved software stability over the previous A.01.01 release and adds enhancements to reporting and data comparison functions.

---

## 2 System configuration

---

### 2.1 System Requirements

#### 2.1.1 PC Hardware (minimum requirements)

The Agilent 2200 TapeStation Controller Software is only supported on bundled PC's provided by Agilent Technologies with the 2200 TapeStation System.

Laptop configurations only support one connected 2200 TapeStation instrument at a time.

The Agilent TapeStation Analysis Software minimum requirements are as follows:

Processor:	2.6 GHz
Memory:	4 GB
Ports:	2 USB ports
Display:	Resolution of 1024*768 pixels
Hard disk:	80 GByte

#### 2.1.2 Operating System requirements

The Agilent 2200 TapeStation Controller and Analysis Software have been tested to run on

- Microsoft © Windows 7 Professional 64 bit with **English (US)** language settings
- Microsoft © Windows 8.1 64 bit with **English (US)** language settings

The reporting function in the TapeStation Analysis Software requires Adobe PDF viewer version 9 or newer to be able to view reports. All laptops supplied by Agilent Technologies will have this pre-installed.

Saving reports is supported in .PDF and .docx format. PDF format is the default and can be accessed by previewing or saving. Docx format can only be accessed by using the dropdown menu in the 'save' dialog box, to change the 'save as' type.

Reports in .PDF format can be printed directly from the reporting Screen on bundle laptops. On non-bundle laptops, this requires Adobe Acrobat to be installed. To print in .docx format, the report must first be saved, then opened in either Microsoft word or word viewer (not provided).

## 2.2 Software Configuration

Regional options must be set to English (US).

---

## 3 Software Installation and Setup

---

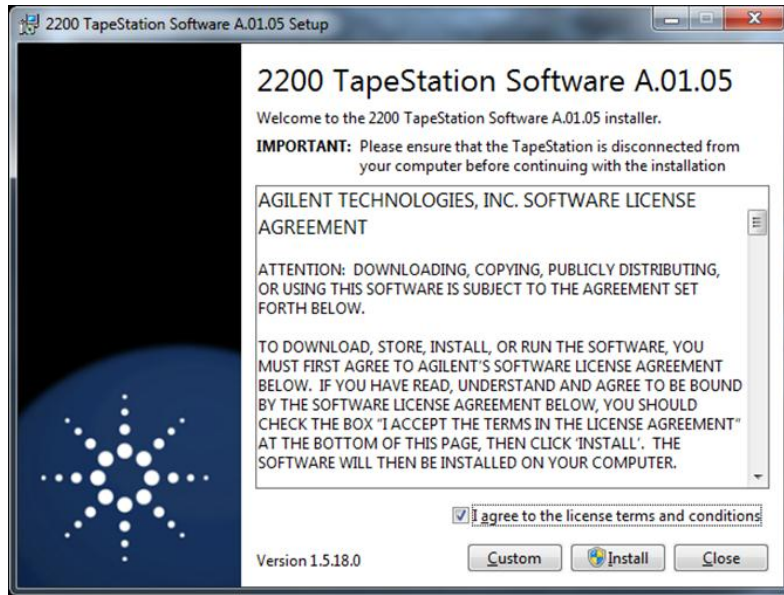
### 3.1 Installation Instructions

The 2200 TapeStation Software installation program "Setup.exe" is a Microsoft Windows application. You must have Windows 7 or Windows 8.1 installed prior to installing 2200 TapeStation Software.

To install 2200 TapeStation Software, perform the following steps:

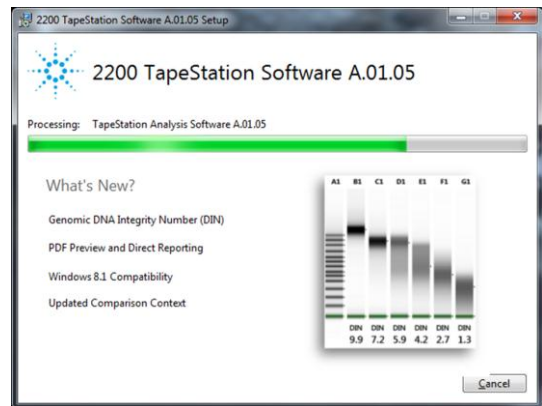
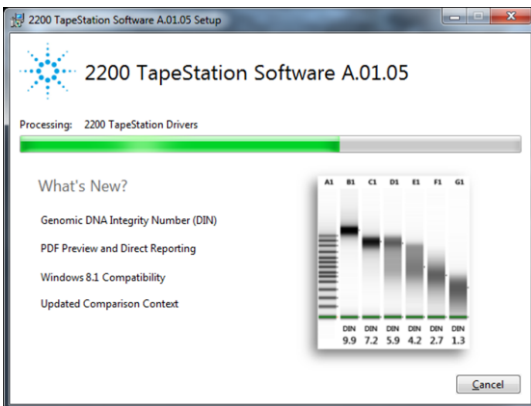
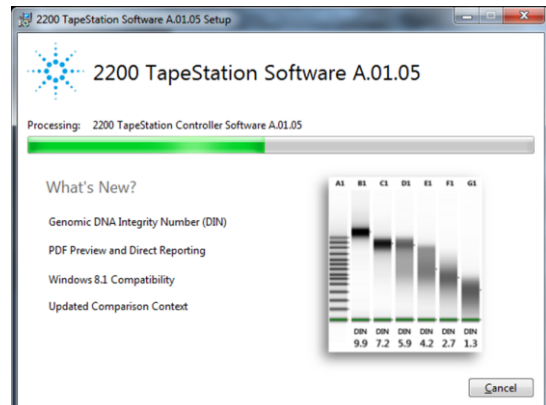
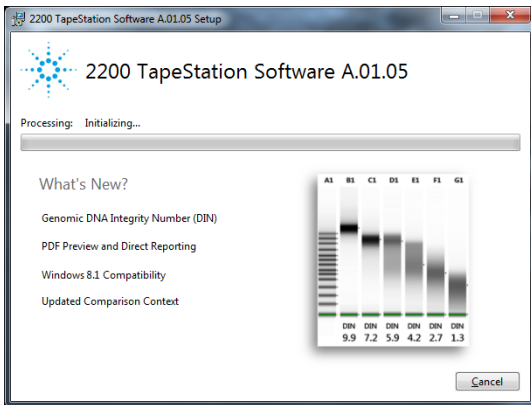
**IMPORTANT:** Ensure that the TapeStation instrument is not connected to the laptop for installation.

1. Start Windows, if you have not already done so.
2. Before installing please make sure you have the appropriate rights to install the software on your computer. You need to have an account with **administrative rights** to successfully install all required components.
3. Insert the installation CD into your CD ROM drive or download the installation program from the following link.  
[www.agilent.com/genomics/tapestation-SW](http://www.agilent.com/genomics/tapestation-SW)
4. Close all running programs, including all instances of the Agilent 2200 TapeStation software.
5. Select the installer icon TapeStation Software Setup.
6. If a windows security message appears, select yes, to allow the program to make changes on the computer.
7. When the following window appears select 'I agree to the license terms and conditions' then press 'Install'



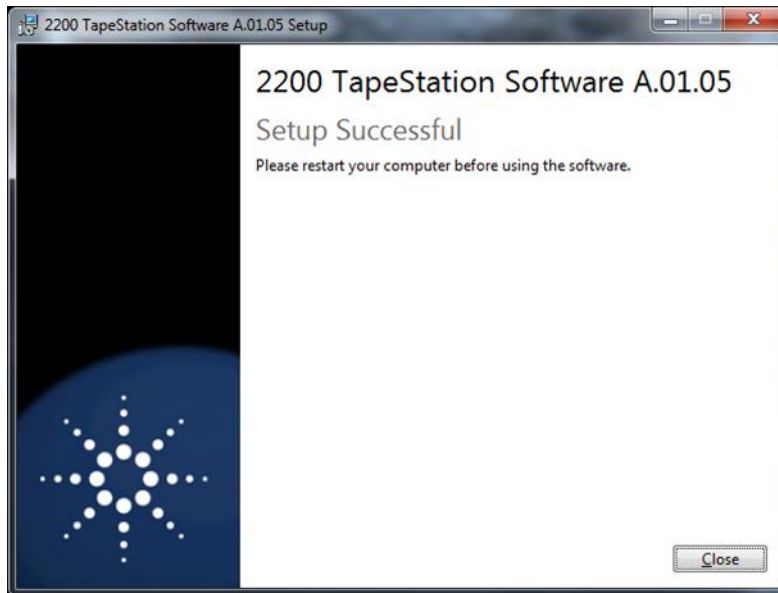
Note: On laptops not required for Instrument control, installation of TapeStation Analysis software only, can be selected using the 'Custom' button.

8. Allow the 2200 TapeStation installer to install all required components:



Note: If installing .Net for the first time, 2200 TapeStation software installation may take some time.

9. Once the 2200 TapeStation Software has been successfully installed, you will see the following window. Click 'Close' to finish installation



10. Re-start the laptop to ensure successful software installation.

### 3.2 Uninstall Instructions

If after installing Agilent 2200 TapeStation Software, you find it necessary to remove the software from your computer, perform the following steps:

Uninstall instructions for Windows 7 and 8.1:

- a. From the control panel, open 'Programs and Features'.
- b. Select **2200 TapeStation Software** from the list of applications that can be uninstalled by Windows.
- c. Click on the Uninstall button to uninstall Agilent 2200 TapeStation Software.

If you encounter problems whilst upgrading 2200 TapeStation software, please remove existing TapeStation software installations using the 'Programs and Features tool'. If this does not resolve the installation issues, please use the tool contained in the link below.

[http://support.microsoft.com/mats/Program\\_Install\\_and\\_Uninstall/](http://support.microsoft.com/mats/Program_Install_and_Uninstall/)

### 3.3 Downgrade Instructions

**Note: Do not open files made in A.01.05 (SR1) in older versions of the software. This includes acquired new data or saved data files of previous versions after modification.**

**In order to run the older and the newer version of the software in parallel, you may need to install them onto separate PCs.**

In order to return to a previous version of 2200 TapeStation Software, perform the following steps:

- a. Un-install the existing 2200 TapeStation Software revision as instructed in Section 3.2
- b. Reboot the system when instructed.
- c. Install the older 2200 TapeStation Software revision.

---

## 4 Getting Started

---

### 4.1 Connecting your 2200 TapeStation

Start working with your system after the following steps:

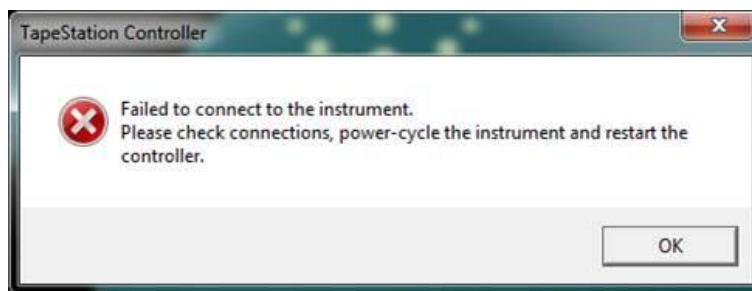
- a. Turn on the laptop. Have 2200 TapeStation Software (Controller and Analysis) installed (section 3.1) but not open.
- b. Physically connect the 2200 TapeStation and the laptop using the supplied USB cable.
- c. Turn on the 2200 TapeStation.

Note: Windows may display a Found New Hardware wizard once the software has loaded. In this instance, always perform the following steps:

- Select 'No, not this time' to prevent connecting to Windows Update and initiating a search for software.
- In the next window select 'Install the Software automatically'.
- If a window appears, indicating the software did not pass the windows logo testing, click 'Continue Anyway'.  
A window will then appear, indicating that the hardware has been successfully installed.

Note: The following error message can appear when the USB port used to connect the TapeStation is altered whilst the instrument is connected and powered up. If this problem occurs, please power cycle the instrument and laptop, then re-start the controller

If it is necessary to change USB port connection, please allow sufficient time between connections for the drivers to be re-installed, this can take up to a minute.



Note: Whilst connected to the instrument, please avoid making any changes to the laptop configuration or any settings available through the control panel. This can interrupt the run and affect results.



---

## 5 Getting Help

---

### 5.1 Using Online Help

Agilent TapeStation Analysis software's online Help system is compatible with the Windows Help subsystems. The Analysis Software Help file contains all of the information you will need to operate your TapeStation Analysis Software and should be used in conjunction with the system User Manual which describes everything you need to operate your 2200 TapeStation and TapeStation Controller Software.

To access the Online Help, press F1, or by click on the question mark on any TapeStation Analysis Software Screen. Help can also be accessed from the file menu, by selecting 'Help'.

### 5.2 Getting Support

Agilent Technologies is committed to providing a reliable, high-quality product that is easy to use.

#### *Documentation:*

For in depth Agilent 2200 TapeStation system information, refer to the user manual supplied electronically with your TapeStation software CD package and available online through [www.agilent.com/genomics/tapestation](http://www.agilent.com/genomics/tapestation).

#### *Customer Support Team:*

However, if you have any problem installing or using the Agilent 2200 TapeStation, we want to know about it and help you.

Please contact your local Agilent Technologies Customer Care Centre to get support on Agilent 2200 TapeStation questions (for details please visit the following web page: [www.agilent.com/genomics/contact](http://www.agilent.com/genomics/contact)). Agilent Technologies also provides electronic support through the World Wide Web.

World Wide Web: [www.agilent.com/genomics/tapestation](http://www.agilent.com/genomics/tapestation)

In any communication with the Agilent 2200 TapeStation support team regarding a problem with the Agilent 2200 TapeStation System, please clearly state the following:

- a. The product name and version number.
- b. Your name, address, e-mail address and telephone number.
- c. Your hardware and software configuration. In the TapeStation Analysis software, go to File, Run properties to get this diagnostic information.
- d. The serial number of your instrument.
- e. A description of the problem, and when it occurred. This can be supplemented using the error file logs which are accessible in the 2200 TapeStation software file menu, under help. By clicking on export error logs, a log file can be generated and saved.

---

## 6. Known Problems or Limitations

---

- Do not use other USB devices whilst using the 2200 TapeStation. It is strongly recommended that no other USB devices are plugged into the laptop while the 2200 TapeStation is running. The imaging module in the TapeStation is a high resolution device that can utilise the entire bandwidth of the USB link whilst imaging. Use of other USB devices at the same time can cause timing issues with the imaging module that causes the acquisition of data to fail. This problem does not arise if third party USB devices are not in use on the 2200 TapeStation whilst it is running.
- Agilent Technologies recommend that users do not download additional software applications onto laptops containing the 2200 TapeStation instrument controller software.
- To ensure full software functionality, all users should be given local admin rights to the 2200 TapeStation laptop.
- Operating system regional settings must be set to English (US).
- Avoid switching users under Windows. Instead either use a single account for the analysis or always log off after running the 2200 TapeStation.
- If you encounter problems whilst installing upgrading the 2200 Software package, please remove existing TapeStation software installations. If this does not resolve the installation issues, please use the tool contained in the link below.  
<http://support.microsoft.com/mats/Program Install and Uninstall/>
- TapeStation Analysis software only supports a screen DPI of 100%. If the screen DPI is set any higher, problems with images can arise. To see your settings; open your control panel, and select display.

---

© Copyright 2014 Agilent Technologies, Inc. Use, reproduction, and distribution are subject to approval of Agilent Technologies.

Microsoft, Windows, Windows Vista Windows 7 and Windows 8.1 are U.S. registered trademarks of Microsoft Corporation.

---

End of Readme

---